

SCHEDULE "A"

CITY OF NANAIMO PRELIMINARY LAYOUT ACCEPTANCE

RECEIVED

MAY 14 2015
SLIB01103
CITY OF NANAIMO
ENGINEERING & SUBDIVISION

205-MAY-27 *Denn Morrison*
Date Approved By

2016-MAY-27
Expiry Date

TOTAL SITE AREA	32985 m ²
AQUATIC AREA	6404 m ²
DEVELOPMENT AREA	26581 m ²
PARK DEDICATION 5%	17175 m ²
DEVELOPMENT AREA	24835 m ²

PARK DEDICATION	81036 m ²	PARK SHOWN (non-aquatic)
17175 m ²	5% REQUIRED	
63861 m ²	TRANSFER AREA	

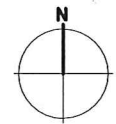
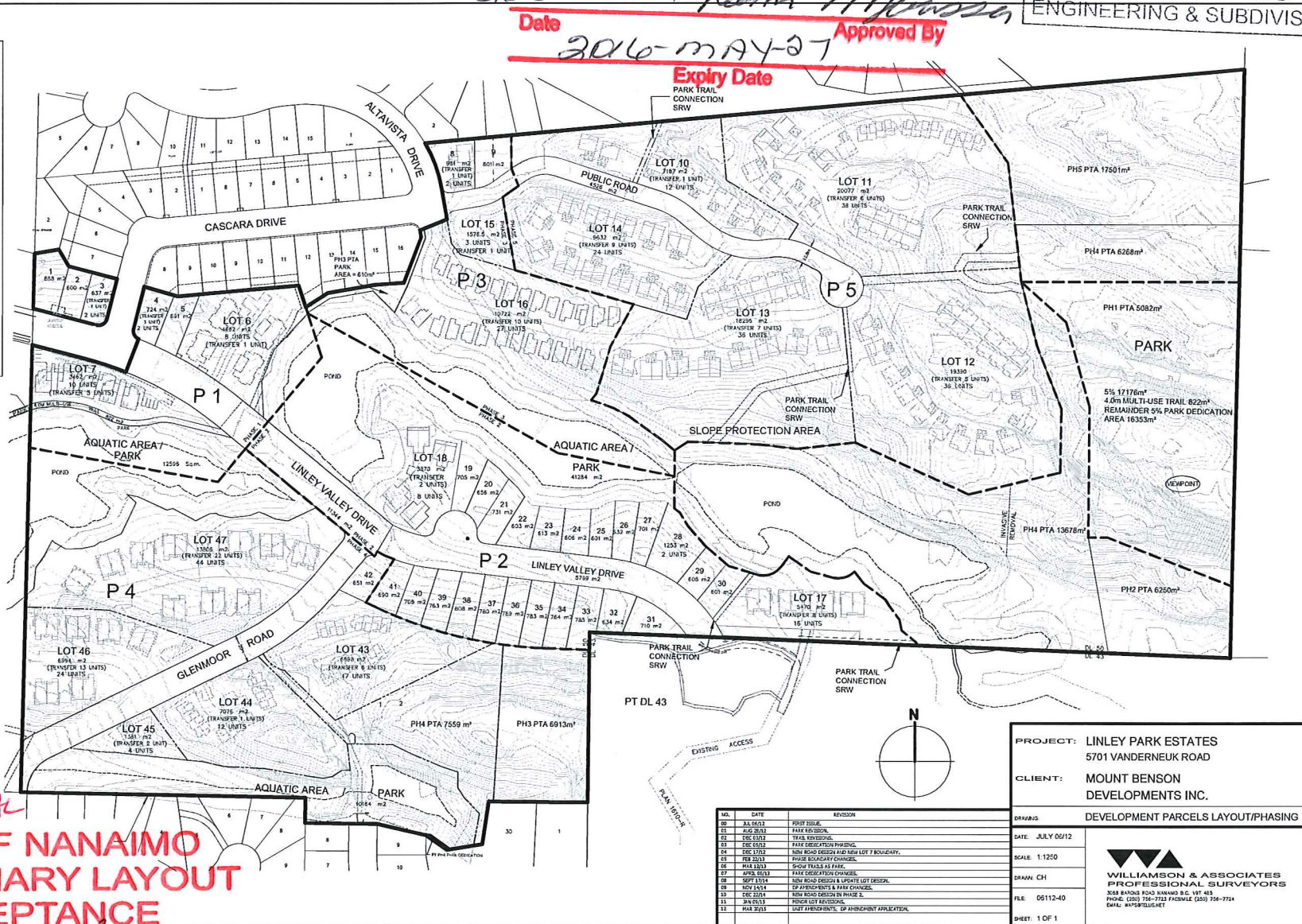
4.0m TRAIL	822 m ²
PARK AREA	16353 m ²
TOTAL AREA	17175 m ²

LOTS 600m ² OR LARGER = 27

MULTI-SITES (M) & SMALL LOTS (SL)
M-LOT AREA UNITS TRANSFER TOTAL
3 637 1 1 2
4 724 1 1 2
6 4662 7 1 8
7 3463 5 6 10
8 981 1 1 2
10 7187 11 1 12
11 20077 32 6 38
12 19390 31 5 36
13 18256 29 7 36
14 9632 15 9 24
15 1577 2 1 3
16 10722 17 10 27
17 5470 8 8 16
18 3870 6 2 8
28 1253 2 0 2
43 6558 11 6 17
44 7076 11 1 12
45 1351 2 2 4
46 6994 11 13 24
47 13506 22 22 44

144139 225 102 327
T/A 63862 (TRANSFER AREA) (102)
TOTAL UNITS = 354 UNITS
ZONING R10 = 18 UNITS/HA

PHASED PARK AREA DEDICATION
PTA = PARK TRANSFER AREA
PHASE AREA UNITS
1 5069 10
2 6250 10
3 7523 12
4 17201 48
5 17201 28
TOTAL 63861 102



PROJECT: LINLEY PARK ESTATES
5701 VANDERNEUK ROAD
CLIENT: MOUNT BENSON DEVELOPMENTS INC.
DEVELOPMENT PARCELS LAYOUT/PHASING

NO.	DATE	REVISION
00	31.04.02	PROJ TITLE
01	24.05.02	PAK & DESIGN
02	03.06.02	TRAIL REVISIONS
03	03.06.02	PARK DEDICATION PHASING
04	03.06.02	NEW ROAD DESIGN AND NEW LOT 7 BOUNDARY
05	03.06.02	PHASE BOUNDARY CHANGES
06	03.06.02	SHOW TRAILS AS PARK
07	03.06.02	PARK DEDICATION CHANGES
08	03.06.02	NEW ROAD DESIGN & UPDATE LOT DESIGN
09	03.06.02	CP APPROVED & PARK CHANGES
10	03.06.02	NEW ROAD DESIGN IN PHASE 2
11	03.06.02	UNDER LOT REVISIONS
12	03.06.02	USEY AMENDMENTS, CP AMENDMENT APPLICATION

DATE: JULY 09/12
SCALE: 1:1250
DRAWN: CH
FILE: 09112-40
SHEET: 1 OF 1



RENEWAL CITY OF NANAIMO PRELIMINARY LAYOUT ACCEPTANCE

2016-MAY-10 *Denn Morrison*
Date Approved By
2017-MAY-27
Expiry Date